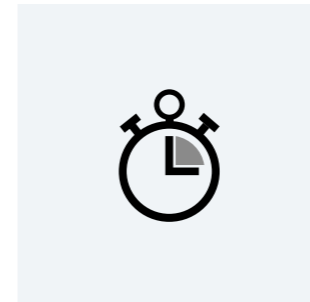


LB Management



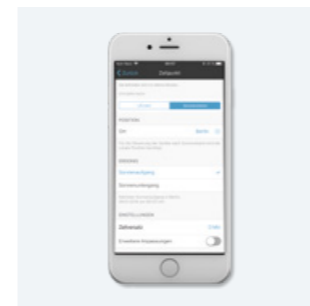
18



04
An overview of all advantages



16
Timer with added convenience



22
The Clever Config app



26
Control light automatically

CONTENTS

The new LB Management	02
Overview of the advantages	04
In use: Single family house	06
In use: Office building	08
The controls	10
The inserts	11
Operation in switch design	12
With the press of a button	14
The Standard timer	16
The Universal timer Bluetooth	20
The Clever Config app	22
Simply illuminating	24
The automatic switches	26
The motion and presence detector	28
Dimming expertise	30
LB Management workbook	32

The new LB Management







Out of the JUNG light and blinds management has come the LB Management. With the combination of different inserts and covers, the modular system provides a solution for virtually every desired function for light and shading control. When retrofitting installations, individual components (always insert plus cover) can also be exchanged for new ones from the LB Management and the others can continue to be used.





The installation is designed for tradespeople. For example, the small installation depth of only 24 mm (DALI insert 29 mm) creates more space for the wiring. A stable supporting plate in steel, the enclosed mounting claws and increased claw pull-out forces provide a firm hold and optimum alignment in the flush-wall box. In addition, satellites can be connected. Test operation at the site is also possible

without a cover. The integrated test button, with which different operating modes can be set, shortens the installation time. The covers are simply pushed on with the help of stable retaining springs in stainless steel. During the installation, the integrated signalling by means of LED or display ensures that no unintended confusion occurs when allocating insert and cover.

Overview of the advantages

<p>SIMPLE, FAST INSTALLATION</p>  <p>Modular system in which inserts and covers can be combined depending on the required function. Simple plug system of the cover onto the insert and plenty of room for wiring for fast installation.</p>	<p>BACKWARDS COMPATIBILITY</p>  <p>From the existing light and blinds management installations, it is also possible to replace only individual modules with new ones from the LB Management, with "old and new" being used together.</p>
<p>TEST BUTTON/OPERATING MODE SWITCH</p>  <p>At the site, test operation is possible using the test button without the cover. It is also used to set various operating modes. This optimises commissioning even more.</p>	<p>CLEVER CONFIG APP</p>  <p>With this app, the Bluetooth devices for the LB Management are set and operated with a smartphone: Convenient control of functions, display of values and states, creation of time controls and configuration.</p>

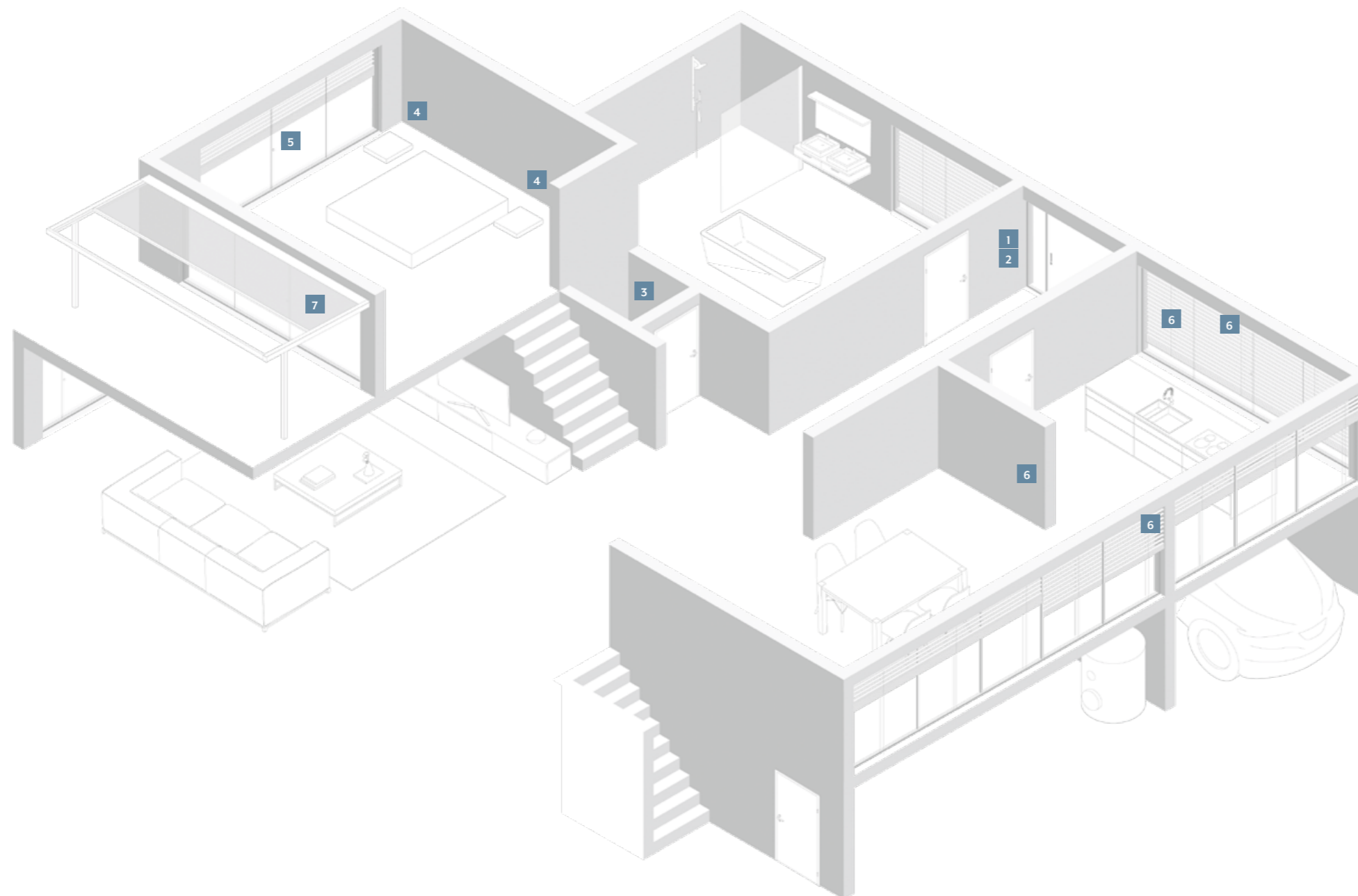
The modular principle of the LB Management offers clear advantages not only for tradespeople but also for owners and modernisers.

<p>CONTROLLING LIGHT AND SHADE</p>  <p>Light and shading control in one system and one design. Always easy to operate due to identical covers. From switching and dimming to blinds adjustment.</p>	<p>CONVENIENT OPERATION</p>  <p>Manually with control buttons with clear symbols for identification of functions. By Bluetooth from a smartphone. Automatically using a timer switch, presence detector or automatic switch. Always intuitive.</p>
<p>BLUETOOTH LOW ENERGY</p>  <p>With Bluetooth Low Energy, connecting and data transmission are particularly convenient. Therefore, this technology is used for LB Management – not just for configuration but also for operation. Independent of WLAN and networks.</p>	<p>INEXPENSIVE RETROFITTING</p>  <p>With existing light or blinds management installations, the components can easily be replaced by a tradesperson or additional modules seamlessly added. Inexpensive, without great effort.</p>

Characteristics are the simple installation and commissioning, the possibility for retrofitting of existing installations and convenient operation.

In use: Single family

In private building, the LB Management provides more convenience and energy efficiency with control of light and shading according to need. Daily routines are made easier with automatic functions. Individual settings and variable operating possibilities improve living quality.

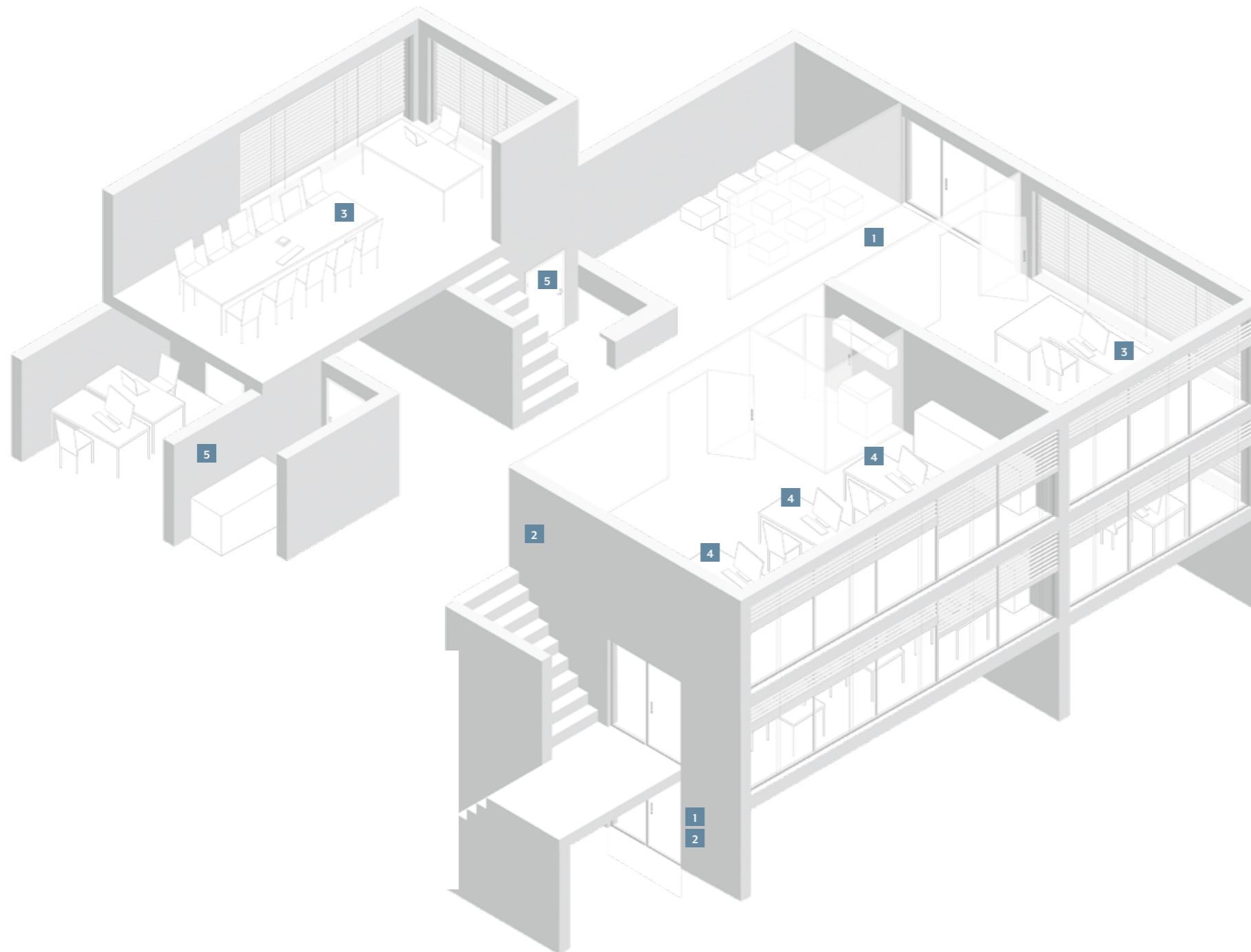


- 1 "Hands-free lighting" with automatic switches: practical and energy-saving
- 2 Alarm function: blinking light for motion detection
- 3 Automatic light in the guest bathroom: no searching for the light switch
- 4 Lighting control with satellite unit: extension by operating element
- 5 Lock-out prevention: deactivation of the automatic shutter control at the press of a button
- 6 Shading complete areas: shutter control in groups by room, floor or house
- 7 Astro function: shade a living room with a timer and based on sun position

The description of these scenarios, with circuit diagrams and parts list can be found in the LB Management workbook.

In use: Office building

In commercial construction such as office buildings, with the LB Management, the working conditions are optimised in a simple manner. Automatic functions provide more security and convenience here. With constant light regulation, the energy efficiency is increased in addition.



- 1 Daylight-linked lighting control in the entrance area: safe and economical
- 2 Automatic stairwell light: automatic switches provide safety, also for retrofitting
- 3 In the meeting room: always the right light with light and shading control matched to your needs
- 4 Constant light function in the office: optimum illumination with a combination of presence detectors and DALI push-button controls
- 5 Semi-automatic lighting with energy-saving function through appropriate delay times: ideal for small kitchens or server rooms

The description of these scenarios, with circuit diagrams and parts list can be found in the LB Management workbook.

The controls



STANDARD CENTRE PLATE

The Standard centre plate is an attachment for all LB Management inserts. Operation of light and shade is manual. The button can be actuated at the top, bottom and also full surface. The centre plate is available with or without symbols.



UNIVERSAL CENTRE PLATE

The Universal centre plate with memory and locking function is suitable for almost all LB Management inserts. A coloured LED is assigned to each rocker half and is used for the function and status display. Operation is performed manually or automatically. The cover for the automatic shading control is available with appropriate arrow symbols.



STANDARD TIMER WITH DISPLAY

The Standard timer is a 1-channel timer for all inserts. The high-quality, real glass surface has an illuminated display and six sensor buttons for operation. The current time can be saved as the switching time using fast programming. The locking function deactivates automatic functions, satellites and timer programmes. Thanks to the astro function, switching times are adapted to the position of the sun.



UNIVERSAL TIMER BLUETOOTH

The Universal timer Bluetooth is an attachment for all inserts for light and shading control. Operation can be manual with the two rockers or with a smartphone using the Clever Config app. Colour LEDs for the display of functions and appropriate button printing optimise operation.



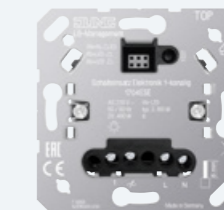
The inserts

LIGHT INSERTS

From simple switching to dimming energysaving lamps or tunable white control, the light inserts offer all possibilities. Possible as a master unit just as much as a satellite unit.



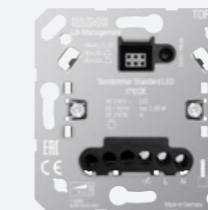
Relay switch insert 1-channel



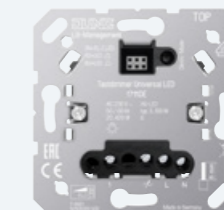
Electronic switch insert 1-channel



Pulse insert



Standard touch dimmer LED



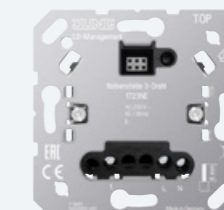
Universal touch dimmer LED



Power DALI push-button controller TW



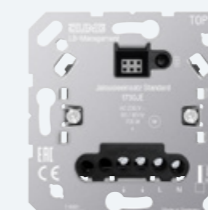
2-wire satellite unit



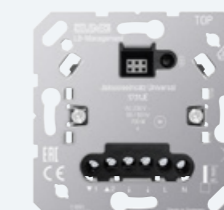
3-wire satellite unit

BLIND INSERTS

With both "Standard" and "Universal" blind inserts in combination with the LB Management covers, all the demands of modern shade control are covered.



Standard blind insert



Universal blind insert



Operation in switch design

The controls in the LB Management are all available in the multifaceted JUNG design. As a result, they convince not only with their intuitive operating philosophy, but also with respect to form, colour and material.





With the press of a button

STANDARD CENTRE PLATE



With arrow symbols for automatic shading control

STANDARD CENTRE PLATE



Without symbols for lighting control

UNIVERSAL CENTRE PLATE



Left button with arrow symbol for automatic shading control

UNIVERSAL CENTRE PLATE



Left button without symbols for lighting control

“Standard” and “Universal” centre plates, depending on the combined insert, light or shading is controlled manually with the press of a button. The universal design has additional convenience functions. For example, the upper right button (lock

symbol) can activate the locking function for all automatic functions and the memory function. Alongside two switching times, a ventilation position for the shutter can also be stored. Thanks to appropriate symbols, operation is self-explanatory.



The Standard timer

STANDARD TIMER WITH DISPLAY



LS 990 in white

STANDARD TIMER WITH DISPLAY



LS 990 in black

STANDARD TIMER WITH DISPLAY



A creation in white

STANDARD TIMER WITH DISPLAY



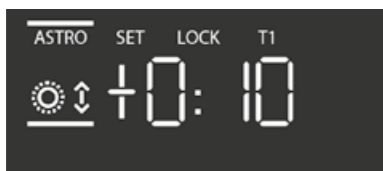
A creation in black with glass frame

Real glass front in black or white with six sensor buttons for intuitive operation – these are the striking characteristics of the Standard timer with illuminated display. In this way, the automatic control of light and shading becomes particularly convenient.



SWITCHING TIMES

The Standard timer has two week blocks: from Monday – Friday and from Saturday – Sunday. For both, time switching for light (4 times) or shade (2 times) can be programmed.



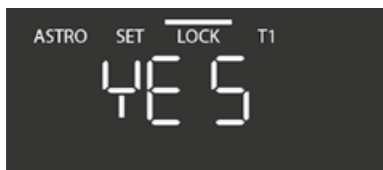
ASTRO FUNCTION

The astro function controls light and shade depending on sunrise and sunset.



SUMMER/WINTER CLOCK CHANGE

The change from summer to winter time and back is automatic. In the process, switching times are changed accordingly.



LOCK-OUT PREVENTION

Protection against being locked out: if the locking function is activated, this is shown clearly on the display.

The display switches off automatically after two minutes or a continuous display of the current time is possible. The current time can be saved as the switching time using fast programming. The next blind movement

time or switching time is shown on the display. The integrated Astro function, automatic summer/winter clock change and a locking function are also included.



Timer with added convenience

All values are displayed in a clearly readable form with the backlit display of the Standard timer.

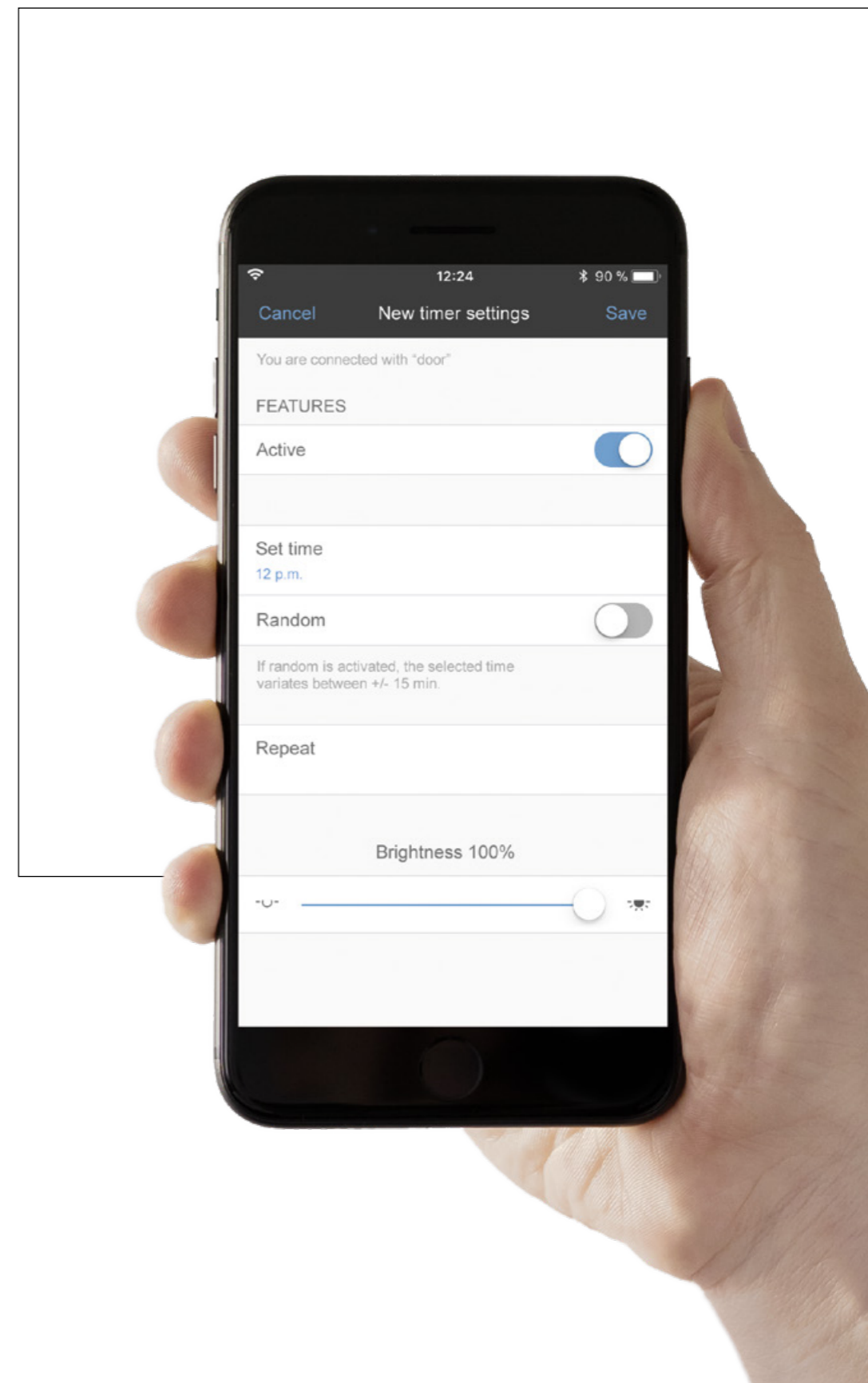
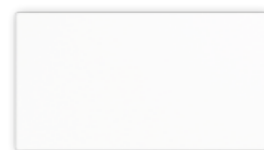
The Universal timer Bluetooth



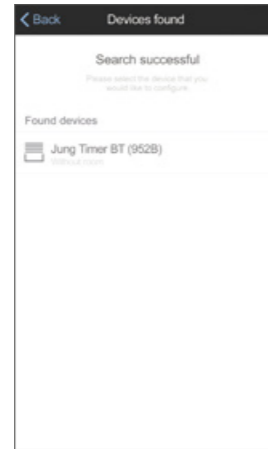
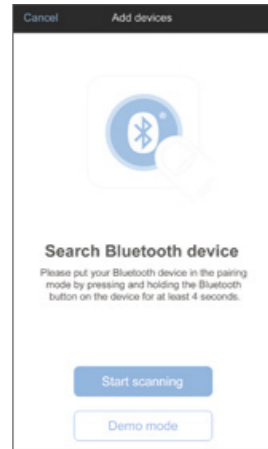
The Universal timer Bluetooth impresses above all with its operating concept. The operation and parametrisation are carried out both mechanically with button presses and mobile with a smartphone with the Clever Config app. The combination with the brightness/temperature sensor allows automatic shade or light control based on sun position. With Bluetooth Low Energy,

connecting and data transmission are particularly convenient and secure.

Brightness and temperature sensor

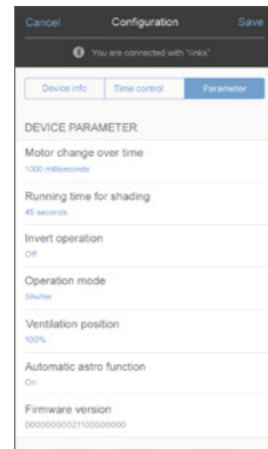
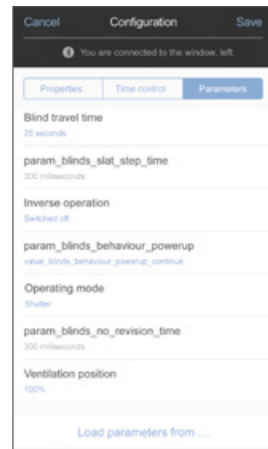


The Clever Config app



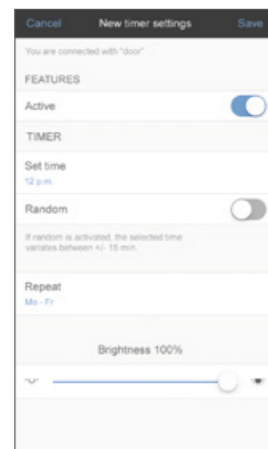
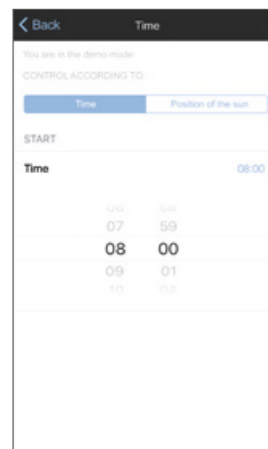
CREATING A CONNECTION

Connecting the app with the LB Management device uses Bluetooth Low Energy. After a successful scan, the devices found are displayed in a clear list. The respective device configurations can then be transferred to the app.



SIMPLE SET-UP

The connected devices can now be assigned to rooms and given a name, which simplifies allocation during operation. In the "Parameters" menu point, the device settings can then be individualised as desired or simply copied from devices already stored.

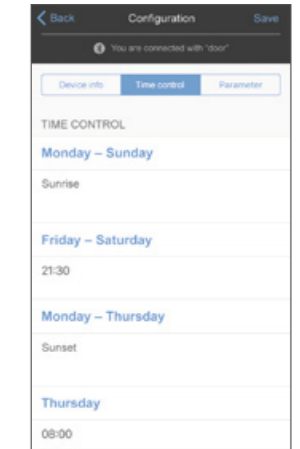
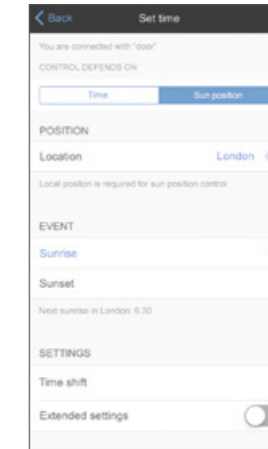


TIMER SETTING

Automatically running timer programmes: creating timer controls for the LB Management is as simple as the alarm on a smartphone. In this way, the respective device is switched on or off or switched to a different status, e.g. "Illumination dimmed 40 %".

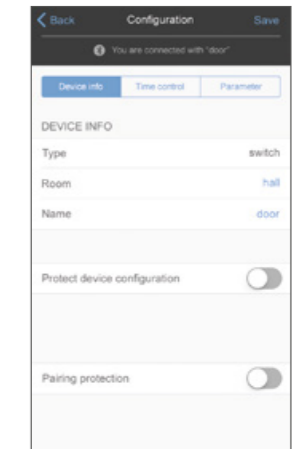
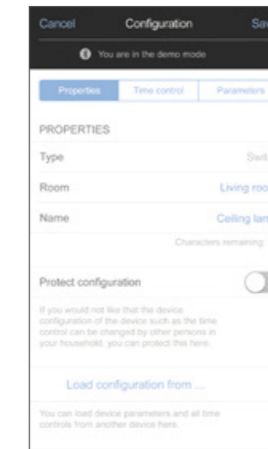
ACCORDING TO SUN POSITION

As well as programming by time, the sequences can also be set with the astro function dependent on the sun position. In the course of the year, the times for the blinds/shutters moving out and in, and the switching on and off of the light, adapt to the changing sunrise and sunset times.



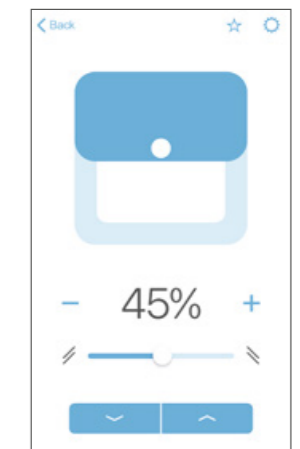
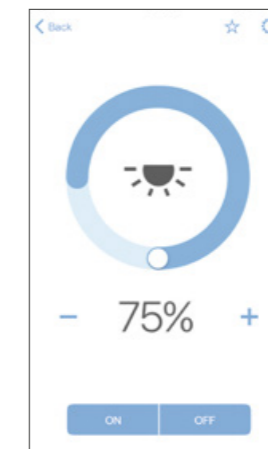
MORE SECURITY

Device configuration and device pairing can be locked with a password and thus protected from unwanted access. The pairing mode can also be protected so that the device cannot be operated with the app by other people.



OPERATION MADE EASY

With one finger tip, the lighting is switched on or off or the illumination is dimmed to the desired brightness. Blinds and shutters are moved out or in or into the desired position. Even the louvre angle can be simply set.





Simply illuminating

Light according to your mood, light on demand – with the components of the LB Management you get more convenience and energy efficiency for your illumination control. Very easy with automatic switches, presence detectors and dimmers.

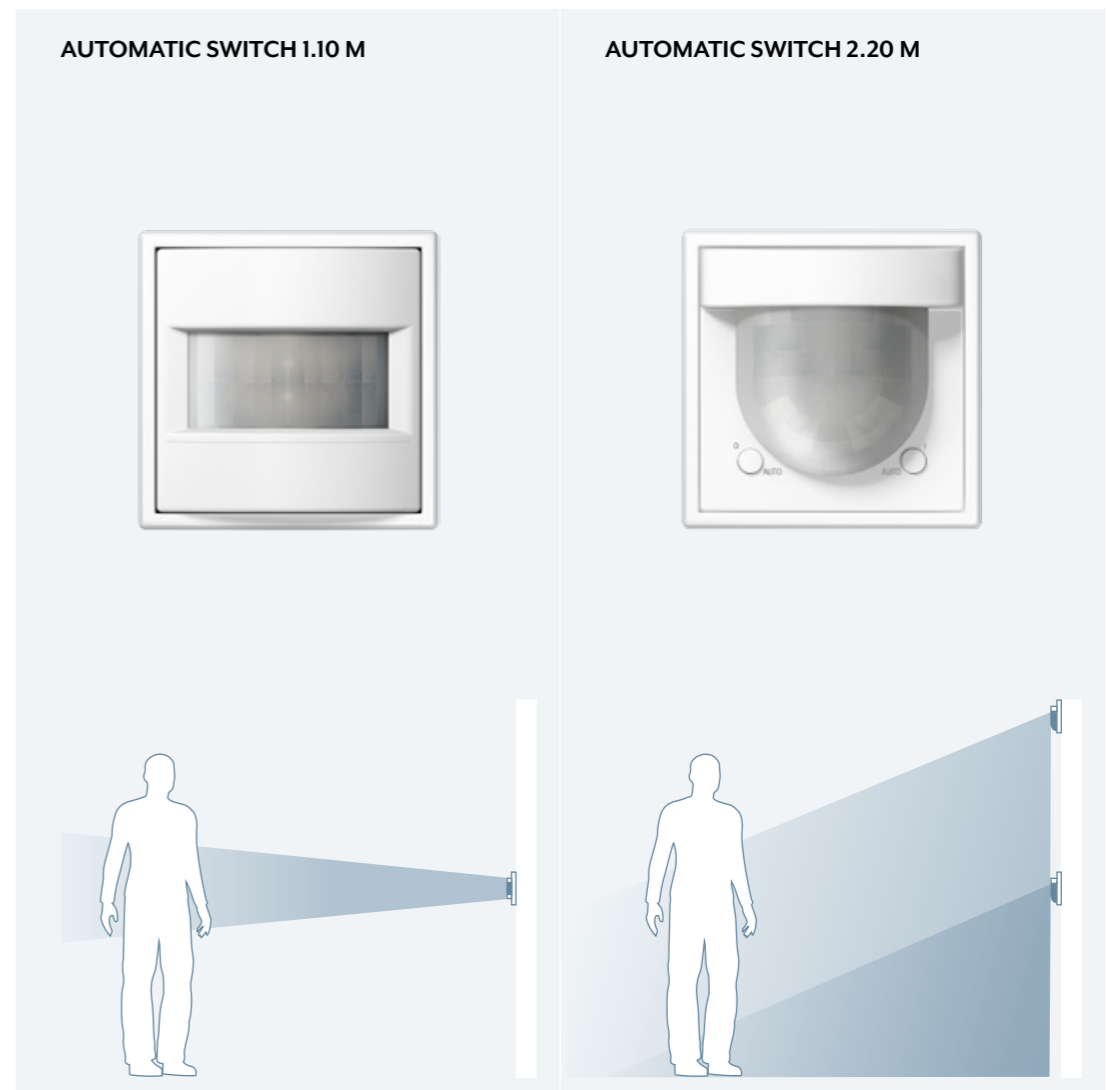




Automatic Light

The automatic switches 1.10 m and 2.20 m for illumination control based on movement.

The automatic switches



The 180° detection range of the automatic switches is monitored by two PIR sensors that can be used individually or together. In the function as movement detector, they are ideal to use in corridors and passages. The 2.20 m

version can be used very well in offices or recreation rooms. The settings in the universal designs are conveniently made using the Clever Config app.

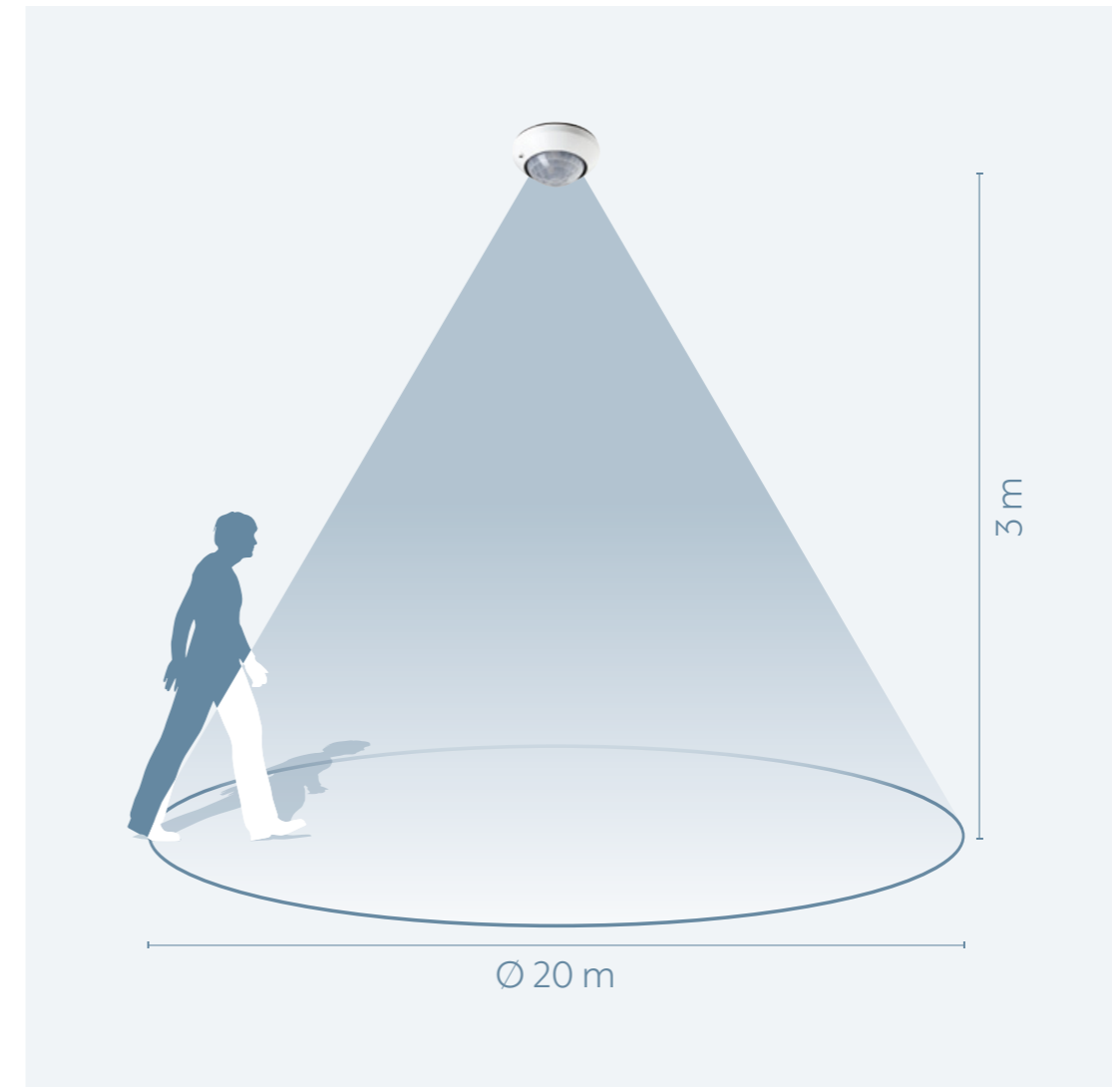
Settings using
Clever Config app



The presence and motion detector



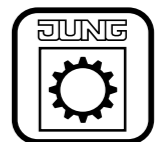
You can rely on the detection characteristics of the motion/presence detector. When installed at heights of up to six metres, the unit registers everything that is moving within a diameter of approx. 20 m. For this, the device has three PIR sensors operating independently of each other. All settings are made conveniently using the Clever Config app.



Each of the three PIR sensors is allocated an individually activated area of 120° detection angle. By grouping up to five devices, the detection area can be extended. In its role as a presence detector, the compact device automatically provides, for example, energy-saving lighting of the work area in an office. In corridors and hallways on the other hand, the motion detector demonstrates its strengths. The device has a 360° detection area with a

radius of 20 metres – assuming an installation height of three metres. The device has a presence, night light, alarm and hotel function as well as constant light control.

Settings using Clever Config app





Dimming expertise

For future-proof lighting control, with the LB Management various options are available, including integrating with a DALI light system. The different shapes can be selected according to the features of the room.

ROTARY DIMMER/POWER DALI POTENTIOMETER

The Standard and Universal rotary dimmers work according to the leading edge phase control or trailing edge phase control principle. Setting the device to the dimming principle that matches the respective consumer is done automatically or also manually for the universal design. A coloured LED indicates the selected operating mode. The Power DALI potentiometer insert operates lamps with DALI interface, including colour temperature control (tunable white).



MINI UNIVERSAL DIMMER LED

The compact dimmer is suitable for installation in standard flush-mounting boxes. The operation of all common lamps is then carried out via a 2-wire satellite unit, rotary satellite unit or a button with make contact. The dimmer mini also uses the leading edge phase control or trailing edge phase control principle.

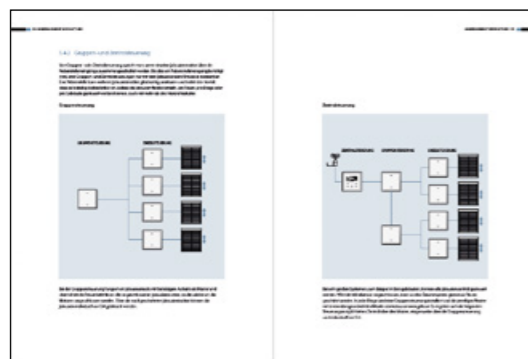


UNIVERSAL DIMMER FOR RAIL MOUNTING LED/ POWER AMPLIFIER

The dimmer version for the distribution also works according to the leading edge phase control or trailing edge phase control principle. The dimmer for rail mounting is operated via a 2-wire or 3-wire satellite unit or with a button with make contact. The power amplifier LED is used as a capacity expansion for spreading larger loads for the LB Management dimmers.

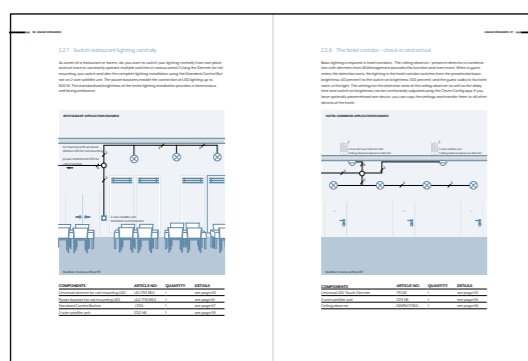


LB Management workbook



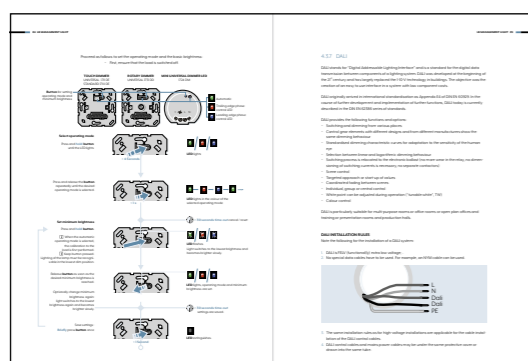
CONTROL VERSIONS

The various possibilities for controlling light and shade described in detail and clearly presented. Including use cases, concrete advantages and notes on connection versions.



WIRING DIAGRAMS

From simple installation of the individual components to complex installations with multiple satellite units or group switching, the descriptions in the workbook are always provided with concrete wiring diagrams.



COMMISSIONING














Commissioning and parametrization of the individual LB Management devices are also explained and illustrated. In this way, the installer can become familiar with the work in advance or also refer to specific areas on location at the site.



The handbook for the electrical installer: With the LB Management workbook, the professional has all the information on the modular system in the hand. From the individual building blocks to functions and application examples to concrete wiring diagrams – all the valuable information in an overview.

Overview reference numbers

Light Management

-  **1201 URE**
Relay switch insert 1-channel
-  **201 TE**
Timer switch insert
-  **1201-1 URE**
Relay switch insert with floating contact
-  **1202 URE**
Relay switch insert 2-channel
-  **1254 TSE**
TRONIC switch insert
-  **1244 NVSE**
LV triac switch insert
-  **1224 LEDUDE**
LED universal touch dimmer insert
-  **1225 SDE**
Standard touch dimmer insert
-  **1252 UDE**
Universal 2-gang dimmer insert
-  **1240 STE**
Push-button controller
-  **1220 NE**
Satellite insert "2-wire"
-  **1223 NE**
Satellite insert "3-wire"
-  **1208 UI**
Pulse unit

LB Management








-  **1701 SE**
Relay switch insert 1-channel
-  **1704 ESE**
Electronic switch insert 1-channel
-  **1710 DE**
Standard touch dimmer insert LED
-  **1711 DE**
Universal touch dimmer insert LED
-  **1713 DSTE**
Power DALI push-button controller TW
-  **1720 NE**
Satellite insert 2-wire
-  **1723 NE**
Satellite insert 3-wire
-  **1708 IE**
Pulse insert

Light






Light

Blind



Light Management

-  **225 TDE**
TRONIC rotary dimmer
-  **225 NVDE**
Rotary dimmer insert
-  **266 GDE**
Rotary dimmer insert
-  **254 UDIE1**
Universal rotary dimmer insert
-  **254 NIE1**
Satellite rotary dimmer insert
-  **UD 1255 REG**
Universal dimmer for rail mounting
-  **ULZ 1215 REG**
Universal amplifier for rail mounting




LB Management

-  **1730 DD**
Standard rotary dimmer LED
-  **1731 DD**
Universal rotary dimmer LED
-  **1733 DNE**
Rotary satellite insert 3-wire
-  **UD 1755 REG**
Universal dimmer LED
-  **ULZ 1755 REG**
Amplifier LED

Blinds Management

-  **230 ME**
Motor control insert
-  **232 ME**
Motor control insert
-  **32 SD**
Sunlight/dawn sensor




LB Management

-  **1730 JE**
Standard blinds insert
-  **1731 JE**
Universal blinds insert
-  **1792 HT BT**
Brightness/temperature sensor Bluetooth









Blind

Blinds Management




AS range






-  **AS 5232..**
Centre plate standard
-  **AS 5232 MS..**
Centre plate with memory function
-  **AS 5232 MS..**
Centre plate with memory function

A range






-  **A 5232..**
Centre plate standard
-  **A 5232 BF..**
Centre plate standard
-  **A 5232 MS..**
Centre plate with memory function
-  **A 5232 BFMS..**
Centre plate with memory function
-  **A 5232 S..**
Centre plate with sensor connection
-  **A 5232 MS..**
Centre plate with memory function
-  **A 5232 T3..**
Centre plate with timer function universal
-  **A 5232 TS3..**
Centre plate with timer function universal

LB Management








-  **AS 1700 P..**
Standard centre plate "arrows"
-  **AS 1701 P..**
Universal centre plate "arrows"
-  **AS 1751 PBT**
Universal timer
Bluetooth "arrows"

-  **A 1700 P..**
Standard centre plate "arrows"
-  **A 1700 PBF..**
Standard centre plate "arrows"
-  **A 1701 P..**
Universal centre plate "arrows"
-  **A 1701 BFP..**
Universal centre plate "arrows"
-  **A 1751 PBT..**
Universal timer
Bluetooth "arrows"


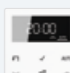
Light Management

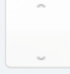



-  **A 5232 BFS..**
Centre plate with sensor connection
-  **A 5232 BFMS..**
Centre plate with memory function
-  **A 5232 T3..**
Centre plate with timer function universal
-  **A 5232 TS3..**
Centre plate with timer function universal
-  **A 5232 ST..**
Centre plate with timer function standard

CD range

-  **CD 5232..**
Centre plate standard
-  **CD 5232 MS..**
Centre plate with memory function
-  **CD 5232 S..**
Centre plate with sensor connection
-  **CD 5232 MS..**
Centre plate with memory function
-  **CD 5232 T3..**
Centre plate with timer function universal
-  **CD 5232 TS3..**
Centre plate with timer function universal and sensor connection
-  **CD 5232 ST..**
Centre plate with timer function standard








LB Management

-  **A 1751 BFPBT..**
Universal timer
Bluetooth "arrows"
-  **A 1750 D..**
Standard timer with display





-  **CD 1700 P..**
Standard centre plate "arrows"
-  **CD 1701 P..**
Universal centre plate "arrows"
-  **CD 1751 PBT..**
Universal timer
Bluetooth "arrows"
-  **CD 1750 D..**
Standard timer with display

Blinds Management

LS range



-  **.. 5232..**
Centre plate standard
-  **.. 5232 MS..**
Centre plate with memory function
-  **.. 5232 S..**
Centre plate with sensor connection
-  **.. 5232 MS..**
Centre plate with memory function
-  **.. 5232 T3..**
Centre plate with timer function universal
-  **.. 5232 TS3..**
Centre plate with timer function universal and sensor connection
-  **.. 5232 ST..**
Centre plate with timer function standard

LB Management


-  **.. 1700 P..**
Standard centre plate "arrows"
-  **.. 1701 P..**
Universal centre plate "arrows"
-  **.. 1751 PBT..**
Universal timer Bluetooth "arrows"
-  **.. 1750 D..**
Standard timer with display

Light Management




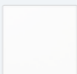
AS range

-  **AS 1561.07..**
Standard centre plate
-  **AS 1561.07U..**
Universal centre plate

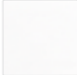

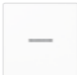


A range





-  **A 1561.07..**
Standard centre plate





LB Management

-  **AS 1700..**
Standard centre plate
-  **AS 1701..**
Universal centre plate
-  **AS 1751 BT..**
Universal timer Bluetooth
-  **A 1700..**
Standard centre plate





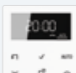
Light Management





-  **A 1561.07 BF..**
Standard centre plate
-  **A 1561.07U..**
Universal centre plate
-  **A 1561.07U BF..**
Universal centre plate
-  **A 5201 DTU..**
Universal timer switch
-  **A 5201 DTST..**
Standard timer switch

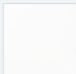



-  **CD 1561.07..**
Standard centre plate
-  **CD 1561.07U..**
Universal centre plate
-  **CD 5201 DTU..**
Universal timer switch
-  **CD 5201 DTST..**
Standard timer switch

-  **..1561.07..**
Standard centre plate
-  **..1561.07 U..**
Universal centre plate
-  **..5201 DTU..**
Universal timer switch
-  **..5201 DTST..**
Standard timer switch

LB Management







-  **A 1700 BF..**
Standard centre plate
-  **A 1701..**
Universal centre plate
-  **A 1701 BF..**
Universal centre plate
-  **A 1751 BF BT..**
Universal timer Bluetooth
-  **A 1750 D..**
Standard timer with display

-  **CD 1700..**
Standard centre plate
-  **CD 1701..**
Universal centre plate
-  **CD 1751 BT..**
Universal timer Bluetooth
-  **CD 1750 D..**
Standard timer with display

-  **..1700..**
Standard centre plate
-  **..1701..**
Universal centre plate
-  **..1751 BT..**
Universal timer Bluetooth
-  **..1750 D..**
Standard timer with display

Light Management





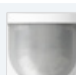

AS/A range

-  **A 1180..**
Standard automatic switch 1.1 m
-  **A 1180 WU..**
Standard automatic switch 1.1 m IP44
-  **A 1180-1..**
Universal automatic switch 1.1 m
-  **A 1180-1 WU..**
Universal automatic switch 1.1 m IP44
-  **A 1280..**
Standard automatic switch 2.2 m
-  **A 1280-1..**
Universal automatic switch 2.2 m

CD range







-  **CD 1180..**
Standard automatic switch 1.1 m
-  **CD 1180 WU..**
Standard automatic switch 1.1 m IP44
-  **CD 1180-1..**
Universal automatic switch 1.1 m
-  **CD 1180-1 WU..**
Universal automatic switch 1.1 m IP44
-  **CD 1280..**
Standard automatic switch 2.2 m
-  **CD 1280-1..**
Universal automatic switch 2.2 m

LB Management

-  **A 17180..**
Standard automatic switch 1.1 m
-  **A 17180 WU..**
Standard automatic switch 1.1 m IP44
-  **A 17181..**
Universal automatic switch 1.1 m
-  **A 17181 WU..**
Universal automatic switch 1.1 m IP44
-  **A 17280..**
Standard automatic switch 2.2 m
-  **A 17281..**
Universal automatic switch 2.2 m

Light Management



LS range

-  **.. 1180..**
Standard automatic switch 1.1 m
-  **.. 1180 WU..**
Standard automatic switch 1.1 m IP44
-  **.. 1180-1..**
Universal automatic switch 1.1 m
-  **.. 1180-1 WU..**
Universal automatic switch 1.1 m IP44
-  **.. 1280..**
Standard automatic switch 2.2 m
-  **.. 1280-1..**
Universal automatic switch 2.2 m


LB Management

-  **.. 17180..**
Standard automatic switch 1.1 m
-  **17180 WU..**
Standard automatic switch 1.1 m IP44
-  **.. 17181..**
Universal automatic switch 1.1 m
-  **.. 17181 WU..**
Universal automatic switch 1.1 m IP44
-  **.. 17280..**
Standard automatic switch 2.2 m
-  **.. 17281..**
Universal automatic switch 2.2 m

Light Management

-  **DAW 360..**
Ceiling automatic switch
-  **PMU 360..**
Universal presence detector

LB Management

-  **DWPM 17360..**
Motion and presence detector

ALBRECHT JUNG GMBH & CO. KG

P.O. Box 1320

58569 Schalksmühle

Germany

Phone +49 2355 806-553

Fax +49 2355 806-254

international@jung.de

For sales contacts in your country see:

jung-group.com/contact

JUNG-GROUP.COM